



## Style and substance in perfect balance

With your Heathwood Home you can be assured of the highest levels of quality and outstanding craftsmanship.

The stately entrance gates at Wallace-ton create a magnificent first impression, while detailed exterior home appointments embody the very essence of gracious upcountry living.

Wallace-ton features a wide selection of architectural elevations – luxurious new home residences that bring the perfect blend of clean, classic lines and contemporary flair.

These are homes of distinction – a place for you and your loved ones to create treasured memories that will last a lifetime.

- 1 Elegant stone, brick and siding façade with classic detailing
- 2 Oversized 8' fiberglass main entry door with luxurious passage set
- 3 Maintenance free, low E Argon-filled vinyl casement windows throughout main and second level
- 4 Self-sealing articulated fiberglass shingles with manufacturer's lifetime limited warranty
- 5 Home wall system insulated to R27
- 6 R60 attic insulation – to keep you warm and save you money
- 7 Sectional insulated garage door
- 8 Paved driveway and precast walkway to front porch
- 9 Two conveniently located exterior electrical outlets
- 10 Two conveniently located exterior water taps
- 11 Fully sodded lot
- 12 One exterior outlet for seasonal lighting

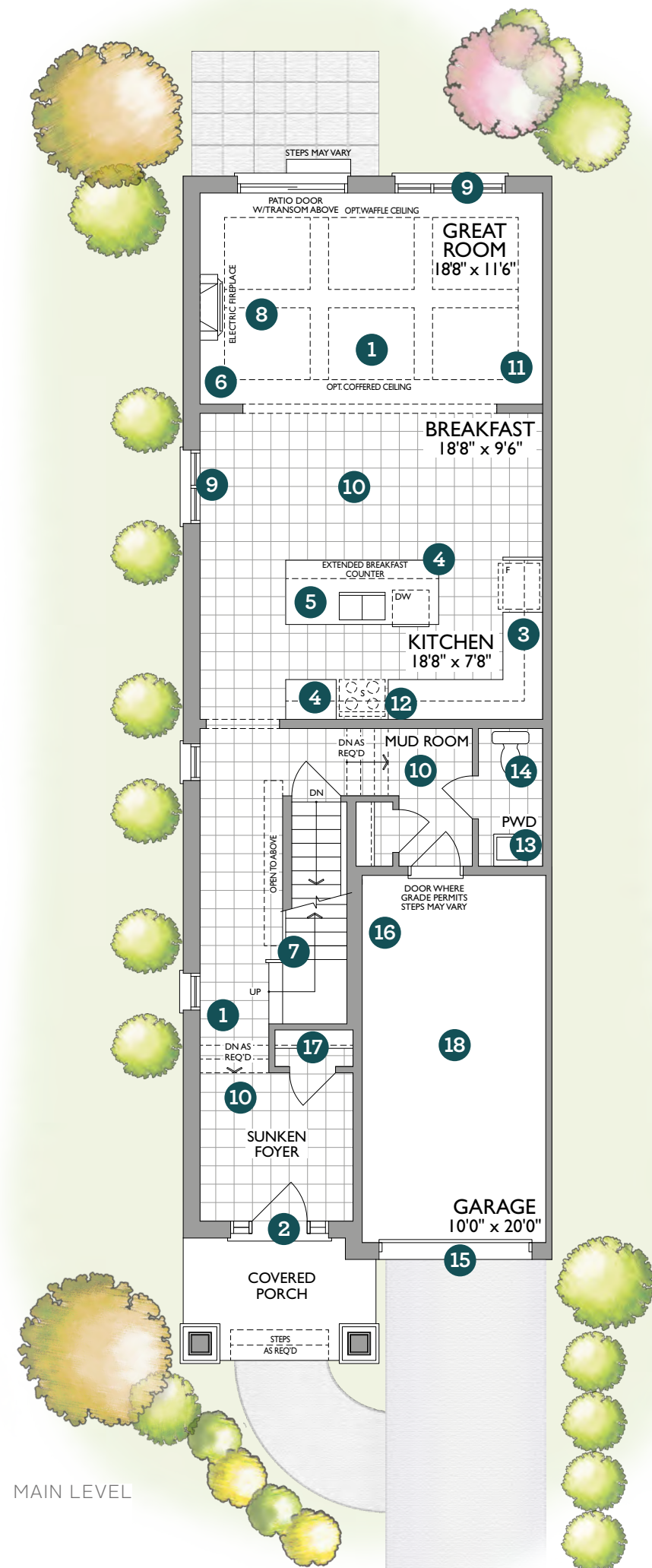
## EXQUISITE EXTERIOR DETAIL



# Exquisite finishes bring luxury amenities to life

## MAIN LEVEL ATTRIBUTES

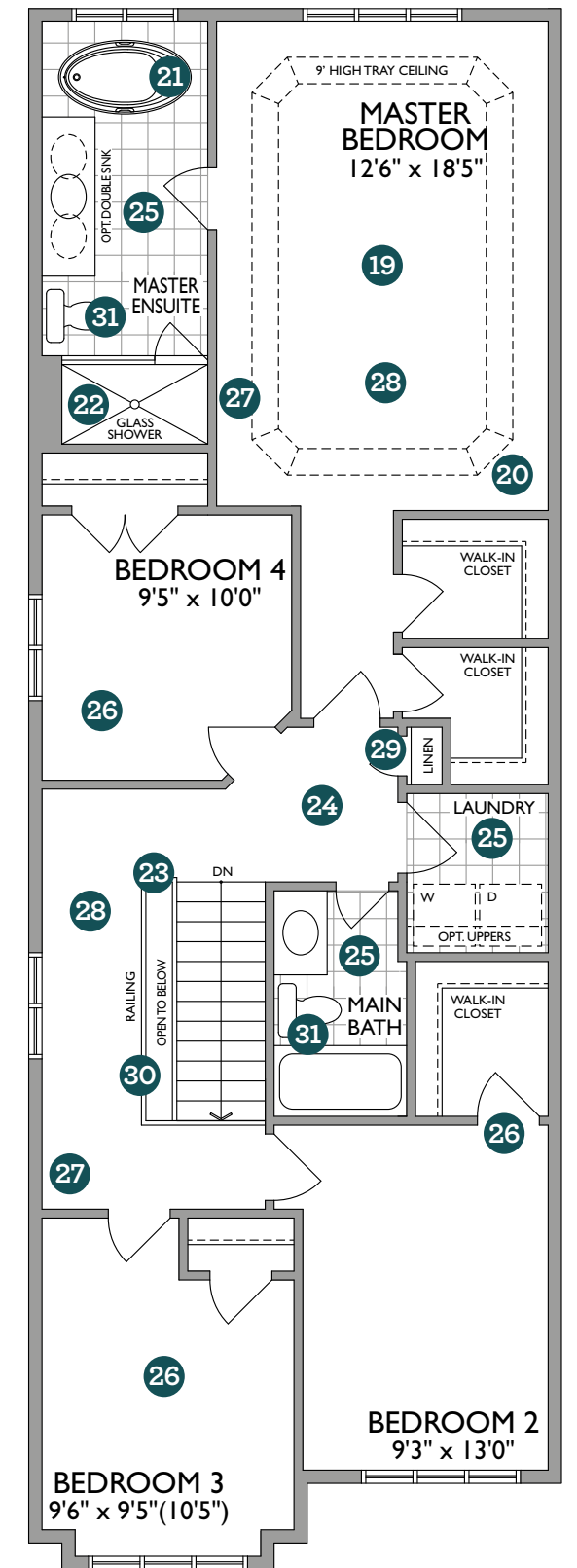
- 1 9' Ceilings throughout the Main Level
- 2 Stunning 8' front door
- 3 Custom designed kitchen cabinetry with extra height uppers
- 4 Luxury stone 3/4" countertops with square edge undermount stainless steel sink and upgraded faucet
- 5 Extra large island with extended breakfast bar\*
- 6 Elegant 3 1/4" oak strip hardwood flooring throughout main level in choice of colour (except tiled areas)
- 7 Oak stairs from Main to Second Level with matching handrail, nosing and pickets in choice of stain
- 8 Cozy electric fireplace with painted mantel\*
- 9 Big bright windows
- 10 Luxurious imported ceramic tile flooring in Kitchen, Breakfast Room, Powder Room, Foyer and Mud Room\*
- 11 4 1/4" Baseboard and 2 3/4" casing
- 12 Stainless steel range hood
- 13 Upgraded square Powder Room pedestal sink
- 14 Low flow toilet
- 15 Sectional insulated garage door
- 16 Central Vac rough-in to garage
- 17 Automatic light in Foyer closet
- 18 Outlet for future garage door opener on garage ceiling



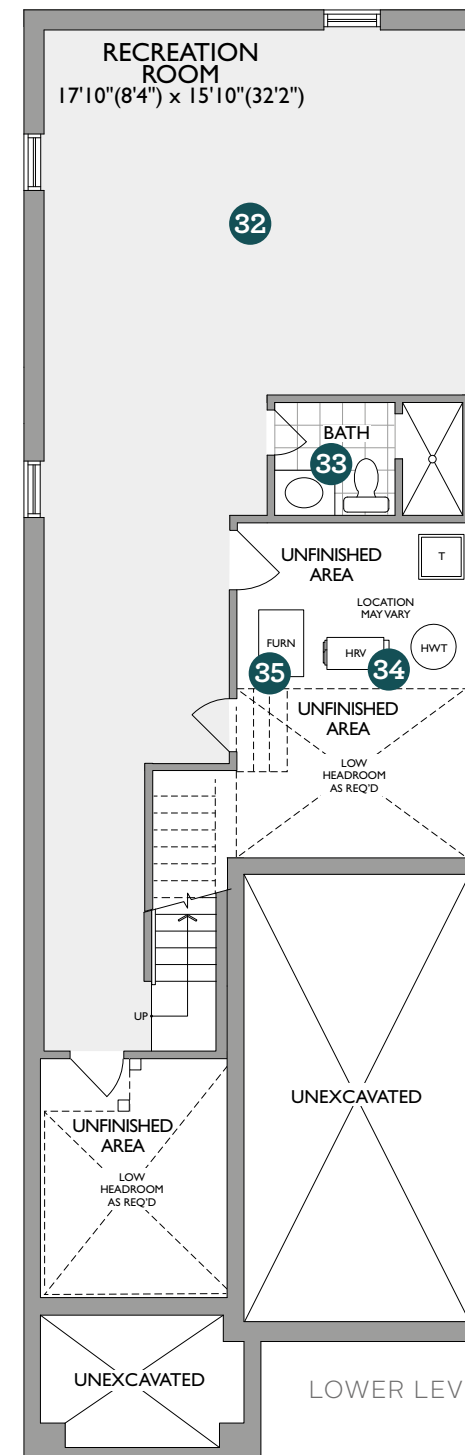
MAIN LEVEL

## SECOND LEVEL FEATURES

- 19 Spacious Master Suite including a Master Ensuite and Walk In Closets
- 20 9' High tray ceiling in Master Bedroom
- 21 Luxurious freestanding soaker tub in Master Ensuite\*
- 22 Chrome frame glass shower enclosure with door in Master Ensuite
- 23 Oak stairs from main to second level with matching handrail, nosing and pickets in choice of stain
- 24 8' High ceilings throughout second level
- 25 Luxurious imported ceramic tile floorings in all Bathrooms and Laundry Room.\*
- 26 Big and bright Bedrooms with lots of closet space
- 27 4 1/4" Baseboard and 2 3/4" casing
- 28 Luxury 40oz broadloom throughout
- 29 Conveniently located Linen Closet\*
- 30 Beautiful railing and picket detail overlooking the staircase\*
- 31 Low flow toilets



SECOND LEVEL



LOWER LEVEL

## LOWER LEVEL HIGHLIGHTS

- 32 Finished Lower Level with approx 9' ceiling†
- 33 Conveniently located 3 piece Bathroom
- 34 Heat Recovery Ventilator (HRV) to help with air quality in your home
- 35 High efficiency furnace

\*As per plan. †Except where beams and heating equipment are required  
Dimensions, specifications and architectural detailing are subject to changes without notice E. & O.E.  
All renderings and landscape features are artist's concept.

