



EXQUISITE EXTERIOR DETAIL

Style and substance in perfect balance

With your Heathwood Home you can be assured of the highest levels of quality and outstanding craftsmanship.

The stately entrance gates at Wallace-ton create a magnificent first impression, while detailed exterior home appointments embody the very essence of gracious upcountry living.

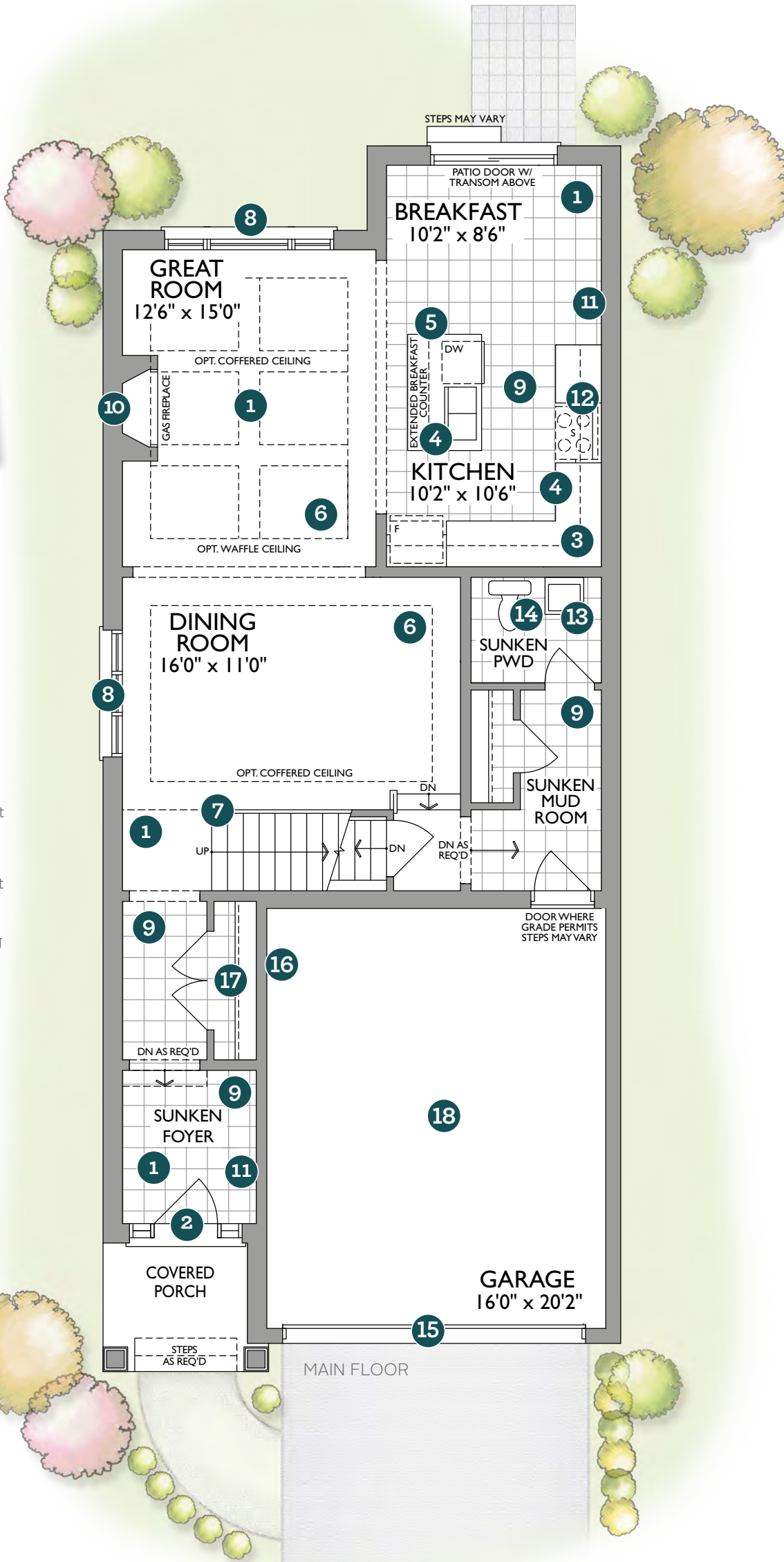
Wallaceton features a wide selection of architectural elevations – luxurious new home residences that bring the perfect blend of clean, classic lines and contemporary flair.

These are homes of distinction – a place for you and your loved ones to create treasured memories that will last a lifetime.

- 1 Elegant stone, brick and siding façade with classic detailing
- 2 Oversized 8' fiberglass main entry door with luxurious passage set
- 3 Maintenance free, low E Argon-filled vinyl casement windows throughout main and second level, some with fixed glass
- 4 Self-sealing articulated fiberglass shingles with manufacturer's lifetime limited warranty
- 5 Home wall system insulated to R27
- 6 R60 attic insulation – to keep you warm and save you money
- 7 Sectional insulated garage door(s)
- 8 Paved driveway and precast walkway to front porch
- 9 Two conveniently located exterior electrical outlets
- 10 Two conveniently located exterior water taps
- 11 Fully sodded lot
- 12 One exterior outlet for seasonal lighting



Exquisite finishes bring luxury amenities to life

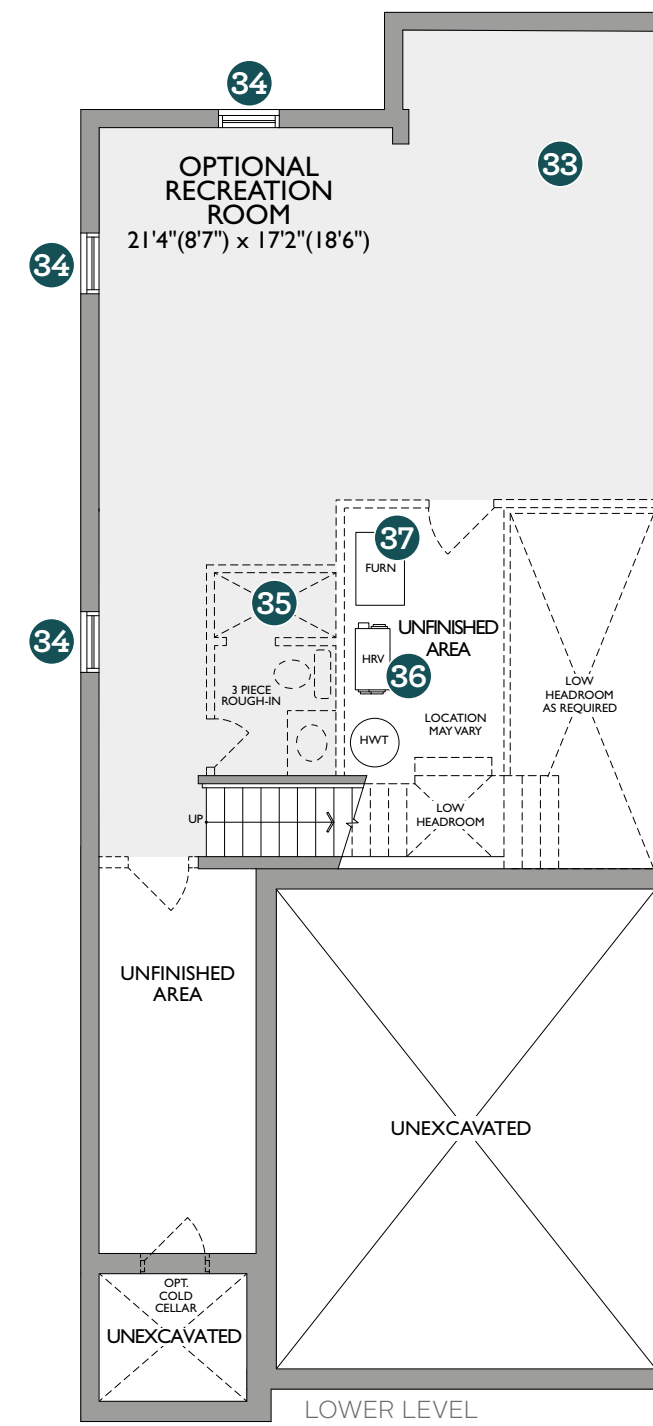
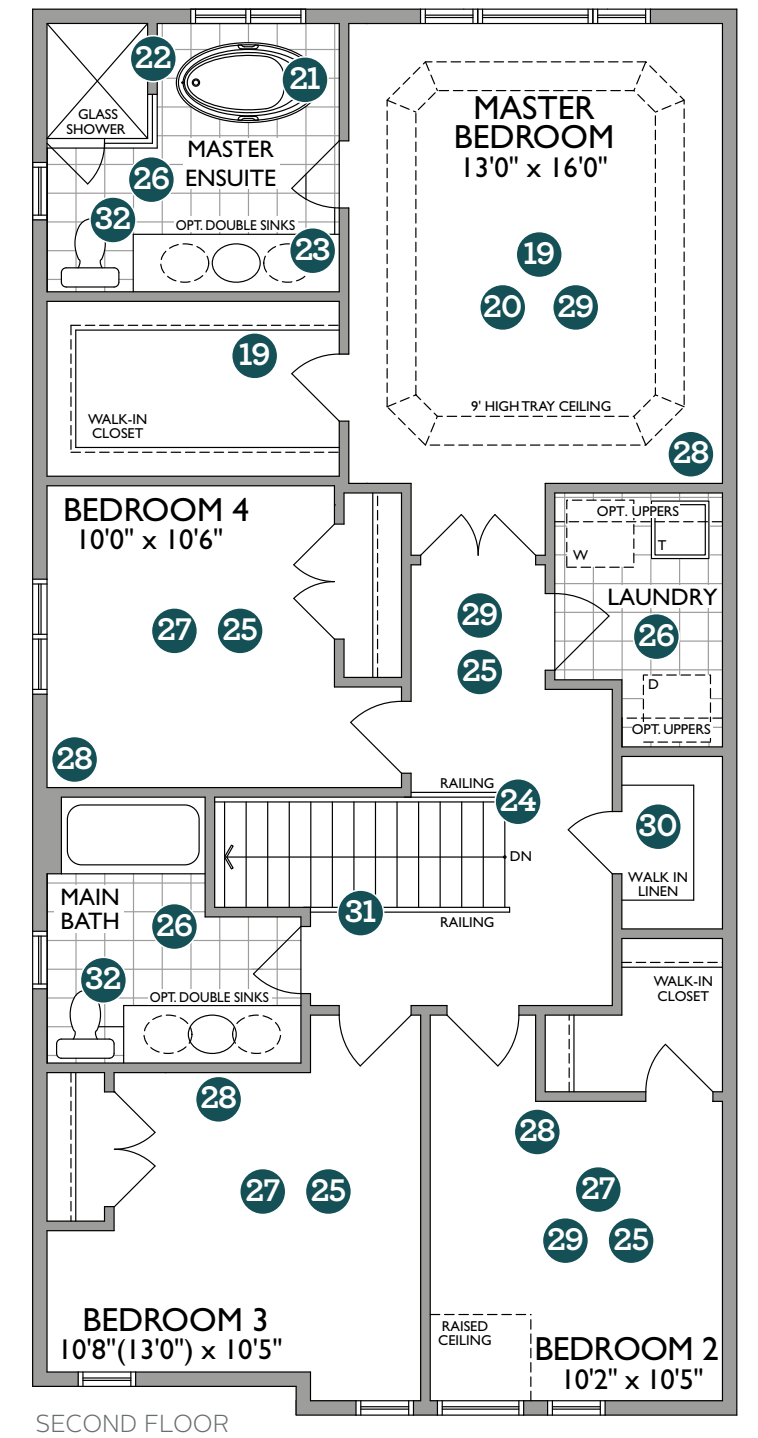


MAIN LEVEL ATTRIBUTES

- 1 9' Ceilings throughout the Main level
- 2 Stunning 8' front door
- 3 Custom designed kitchen cabinetry with extra height uppers
- 4 Luxury stone 3/4" countertops with square edge, undermount stainless steel sink and upgraded faucet
- 5 Extra large island with extended breakfast bar*
- 6 Elegant 3 1/4" oak strip hardwood flooring throughout main level in choice of colour (except tiled areas)
- 7 Oak stairs from Main to Second Level with matching handrail, nosing and pickets in choice of stain
- 8 Big bright windows
- 9 Luxurious imported ceramic tile flooring in Kitchen, Breakfast Room, Power Room, Foyer, Laundry and Mud Room*
- 10 Cozy, direct vent gas fireplace with painted mantle
- 11 4 1/4" Baseboard and 2 3/4" Casing
- 12 Stainless steel range hood
- 13 Upgraded square Powder Room pedestal sink
- 14 Dual flush toilets
- 15 Sectional insulated Garage Door(s)
- 16 Central Vac rough-in to garage
- 17 Automatic light in Foyer Closet
- 18 Outlet for future garage door opener on garage ceiling

SECOND LEVEL FEATURES

- 19 Spacious Master Suite including a Master Ensuite and Walk in Closets
- 20 9' High Tray Ceiling in Master Bedroom
- 21 Luxurious freestanding soaker tub in Master Ensuite*
- 22 Chrome framed glass shower enclosure with door in Master Ensuite*
- 23 Luxury stone counters in Master Ensuite with undermount sinks
- 24 Oak stairs from Main to Second Level with matching handrail, nosing and pickets in choice of stain
- 25 8' High ceilings throughout Second Level*
- 26 Luxurious imported ceramic tile floorings in all Bathrooms & Laundry Room*
- 27 Big and bright Bedrooms with lots of closet space
- 28 4 1/4" Baseboard and 2 3/4" Casing
- 29 Luxury 40 oz. broadloom throughout
- 30 Conveniently located Linen closet*
- 31 Beautiful railing and picket detail overlooking the staircase*
- 32 Dual flush toilets



LOWER LEVEL HIGHLIGHTS

- 33 Unfinished Lower Level with approx 7'8" ceiling†
- 34 Oversized windows
- 35 Conveniently located 3 piece Bathroom rough-in
- 36 Heat Recovery Ventilator (HRV) to help with air quality in your home
- 37 High efficiency furnace with 96% ECM motor

* As per plan. † Except where beams and heating equipment are required.
Dimensions, specifications and architectural detailing are subject to change without notice E. & O.E.
All renderings and landscape features are artist's concept.

